



Managing Pain Safely: Data Sharing Webinar, Southeast Region

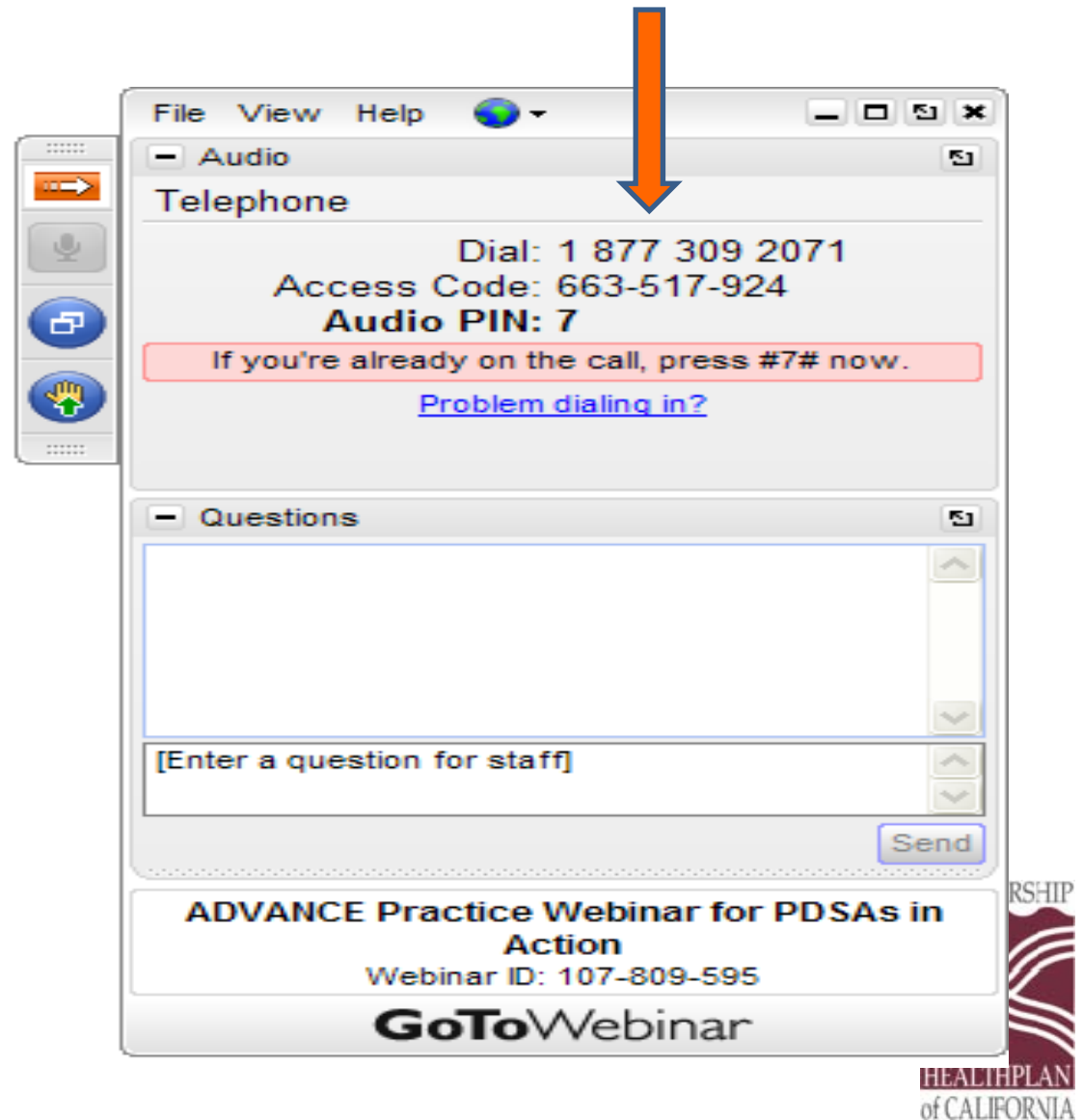
James Cotter, MD, MPH
Regional Medical Director

Dina Haynes, BA, CPhT
Associate Director, Pharmacy
Operations

Partnership HealthPlan of California

Audio Instructions

To avoid echoes and feedback, we request that you **use the telephone** *instead* of your computer microphone for listening/talking during the webinar.



MPS Overview

James Cotter, MD, MPH
Regional Medical Director Southeast Region
Partnership HealthPlan of California



Agenda

- Brief Overview of PHC effort
- Plan Level Data
- County Level Data
- Provider Site Level Data
- Data Sharing Process
- Q&A

Managing Pain Safely – Aim Statement

By December 31, 2016, we will improve the health of PHC members by ensuring that prescribed opioids are for appropriate indications, at safe doses, and in conjunction with other treatment modalities as measured by a:

- Decrease in total number of initial prescriptions by 75%
- Decrease in total number of prescription escalations by 90%
- Decrease in total number of patients on high-dose opioids* by 75%

*Defined as greater than 120 mg. MED

MPS Workgroups

MPS Technical Support

Data Management

Pharmacy

Provider Network

Care Coordination/Utilization Management/ Member Services

Legislative Policy/Regulation/Communication

Community Support

MPS Steering Committee

Interventions

Education

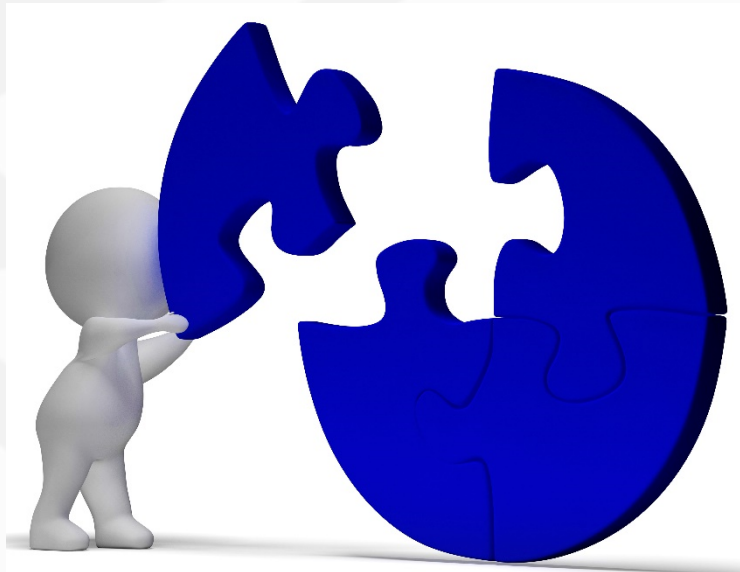
Health plan pharmacy prior authorization changes

Additional options for treating pain

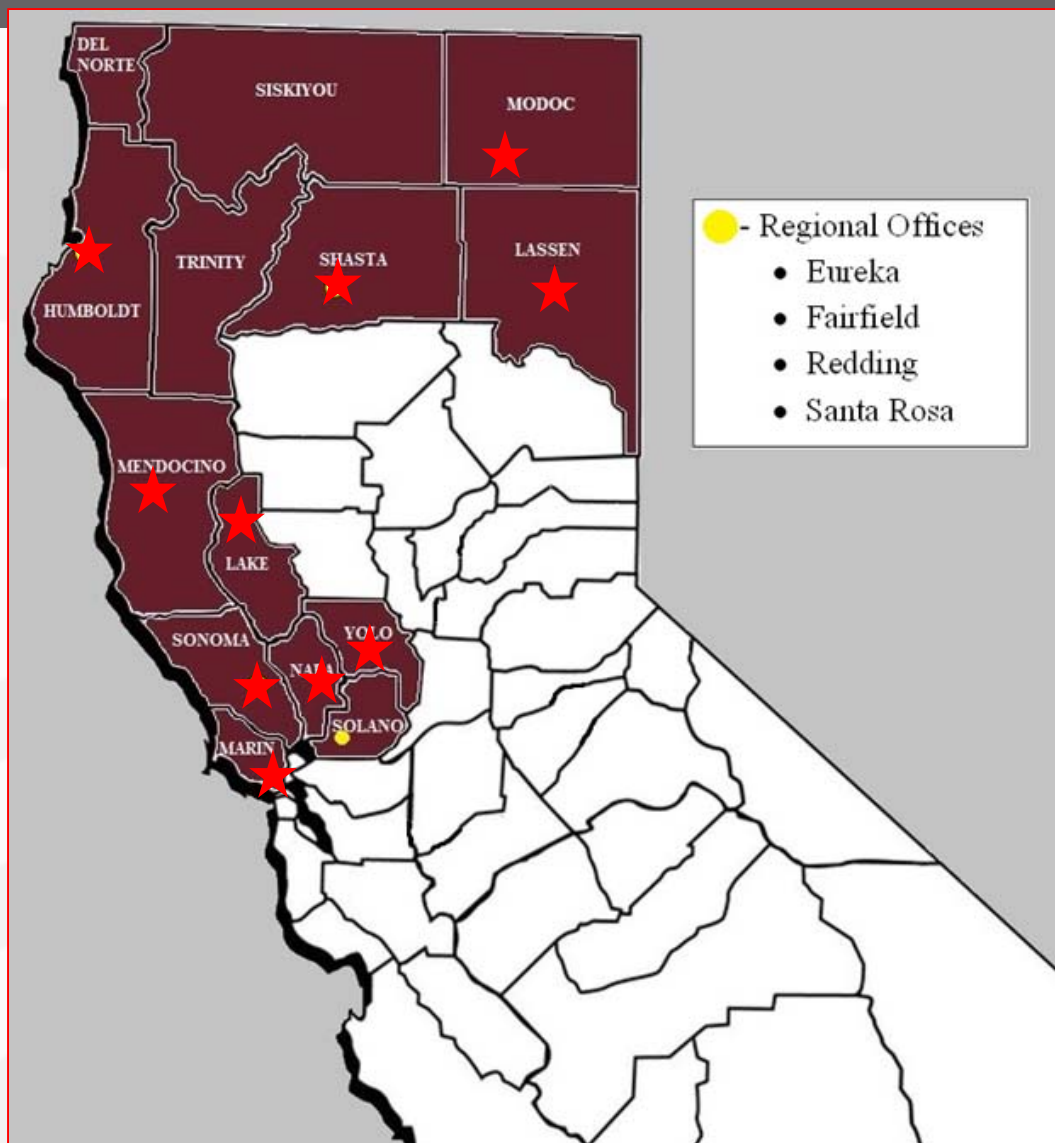
Community activation

Aligned incentives


Additional resources



PHC Counties Participating in CHCF Regional Opioid Safety Coalition Grant Program

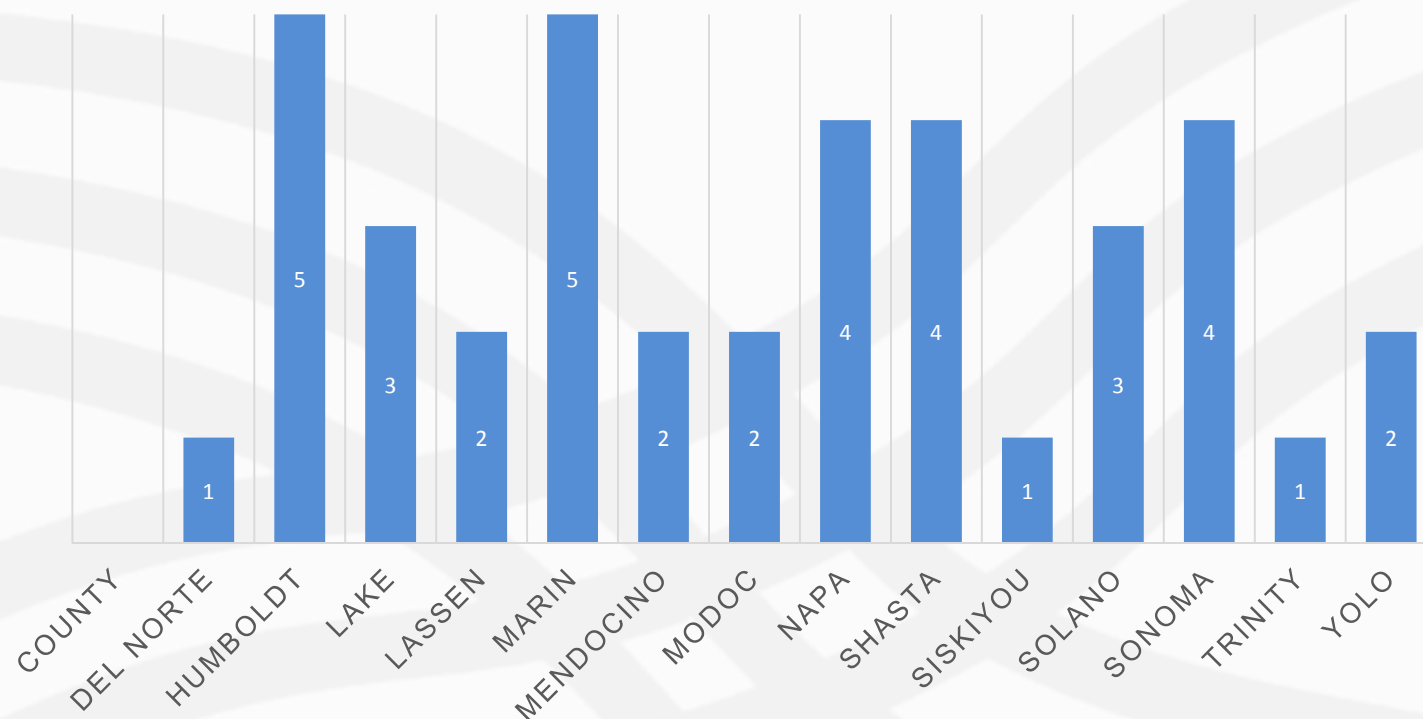


10 PHC Counties are participating in CHCF's Regional Opioid Safety Coalition Grant Program

 CHCF Opioid Safety Coalition County

Community Coalition Status

PHC COUNTY COALITION STATUS



Key

1	Little or No Effort (Yet)
2	Initial Meetings, Beginning of Framework Formation
3	Framework Formation, Action Teams Initiating
4	Strong Effort- Framework Implemented, Regular Meetings, Active Action Teams, Working towards Milestones
5	Robust Effort- Active Action Teams, Accomplishing Milestones, Measurable Results

Looking Ahead in 2016: Health Plan Activities

Provision of tele-consult services for complex patients on high-dose opioids

Education and coordination around addiction screening and treatment

Partner with CHCF for continued support in developing and sustaining local efforts targeted at reducing improper use of opioids

Planning process for creating integrated clinics for high utilizers

Pharmacy academic detailing

MPS provider site level data sharing

Tapering guide/ toolkit

Naloxone Pilot

PHC Data

Dina Haynes, BA, CPhT
Associate Director, Pharmacy Operations
Partnership HealthPlan of California



What We Measure

Total Opioid Prescriptions PMPM

- # opioid prescriptions / # eligible members per month.

% Users on Unsafe Dose

- # opioid users with daily averages of Morphine Equivalent Doses (MED) >120 mg / # total opioid users X 100.

Initial Opioid Prescriptions PMPM

- Total opioid prescriptions per member per month for members with no opioid prescriptions in the 90 days prior to the measurement period.

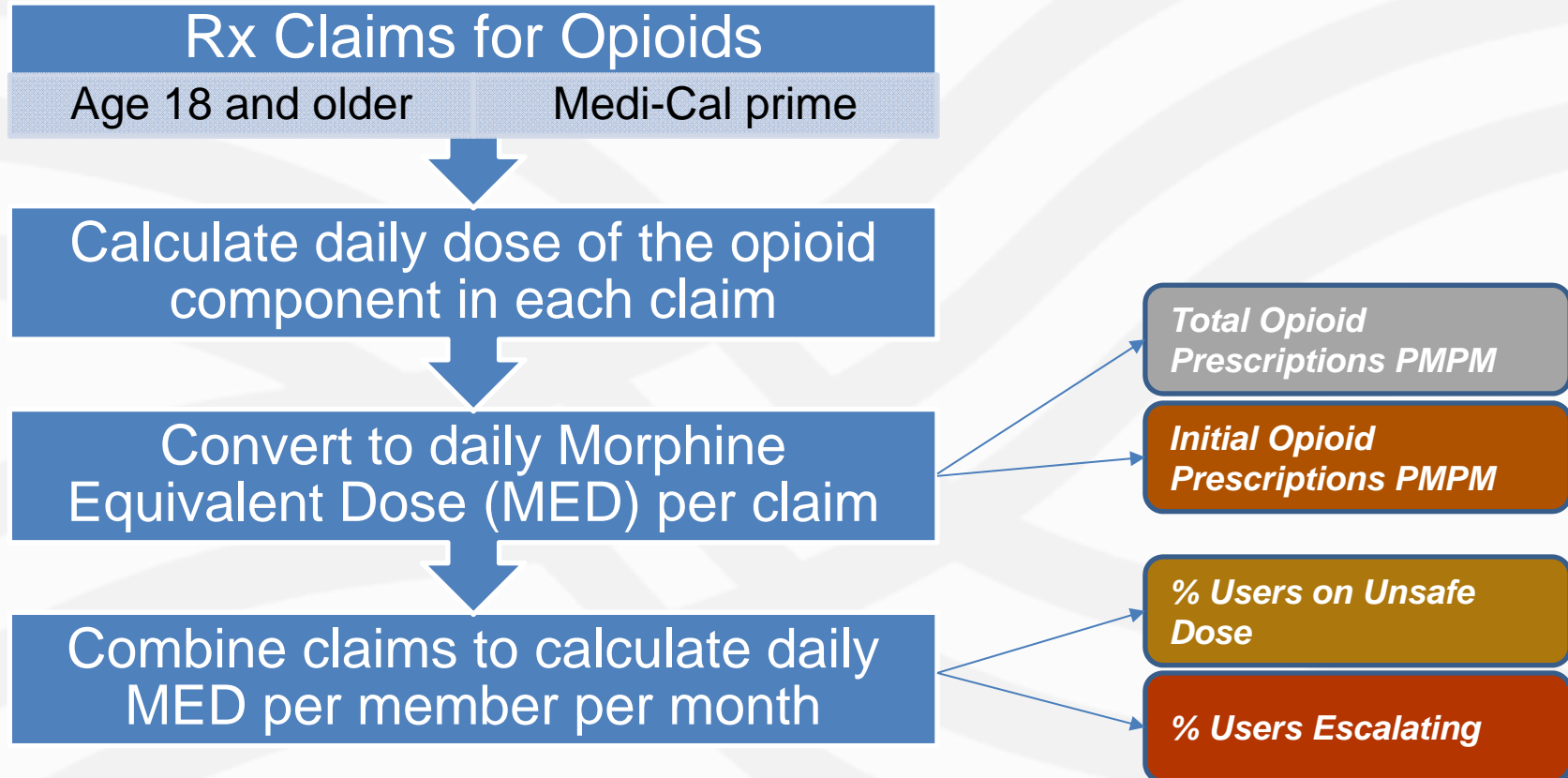
% Users Escalating

- # chronic opioid users with an escalating dose / # total opioid users X 100 over the measurement month.

Escalation: an average daily dose during the measurement period that is > 5% than the average daily dose in the 90 days prior the first day of the measurement period.

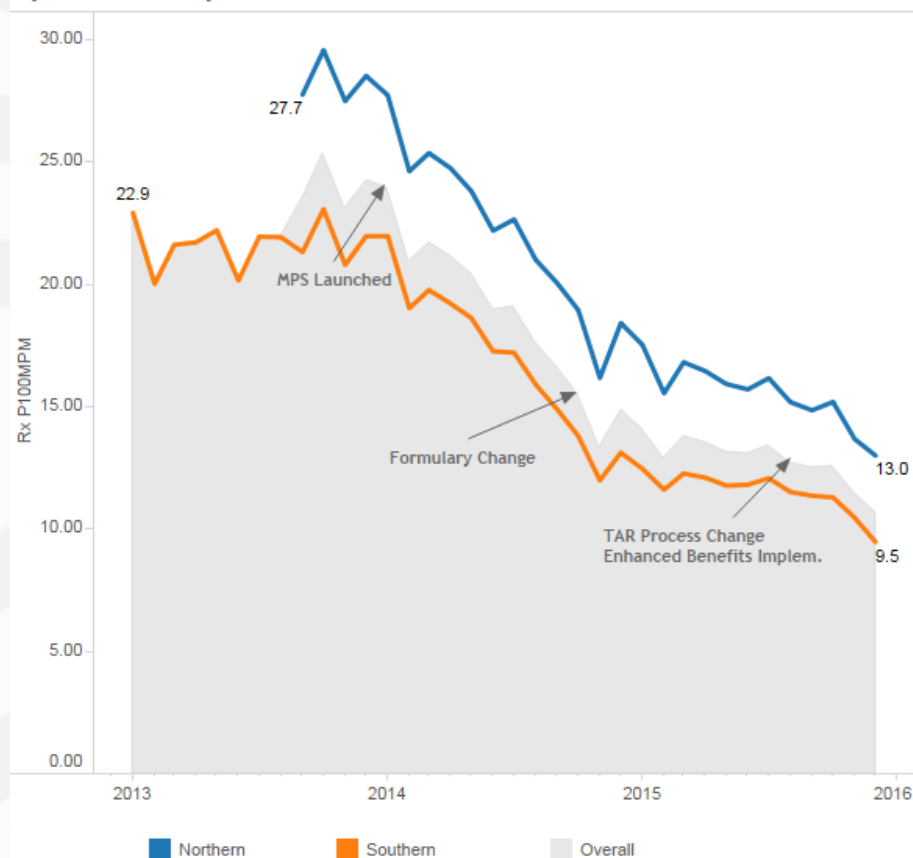
Chronic opioid user : members with opioid prescriptions for at least 3 consecutive months with total 75 days supply or higher

How Data is Processed

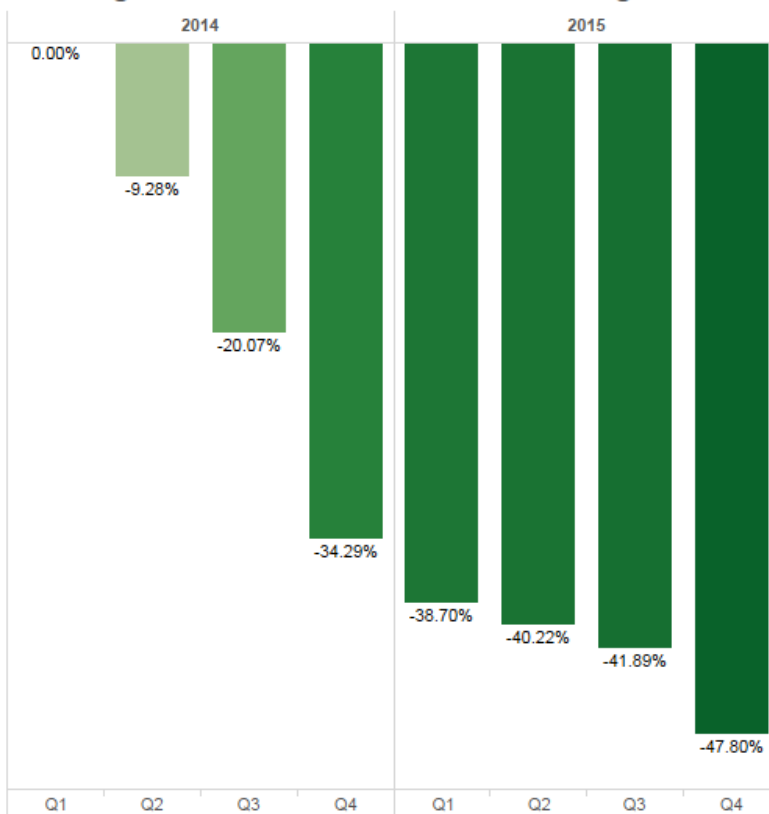


Opioid Fills PMPM

Opioid Prescriptions P100MPM

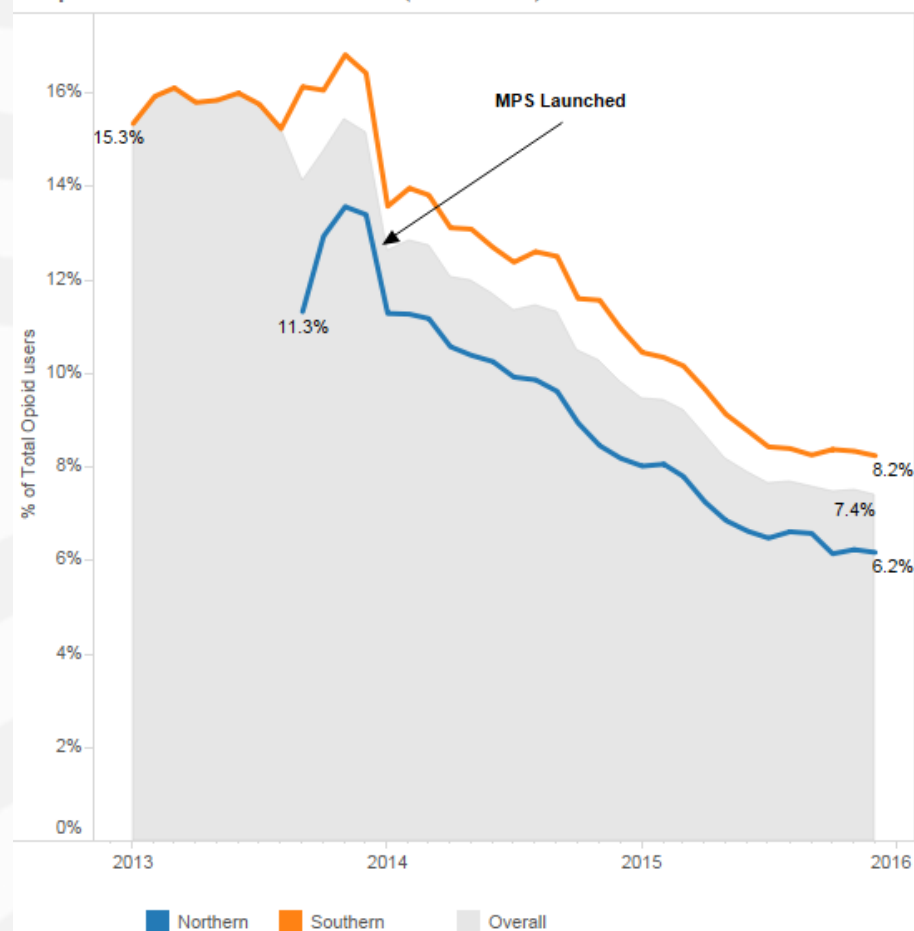


% Change Rx Fills PMPM from MPS Launching

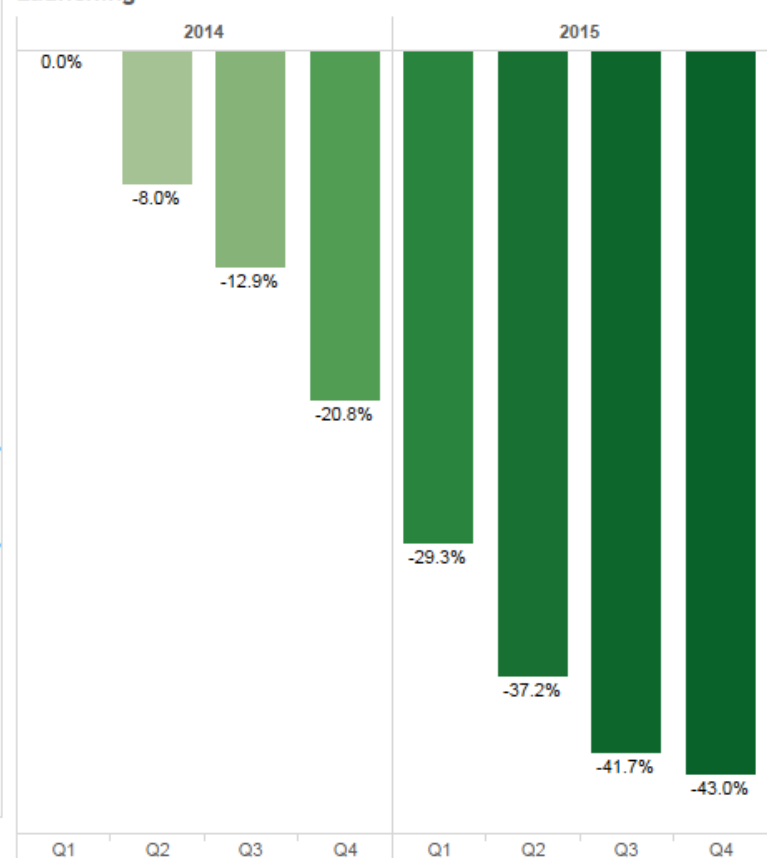


Unsafe Dose (>120 MED)

% Opioid Users on Unsafe Dose (>120 MED)

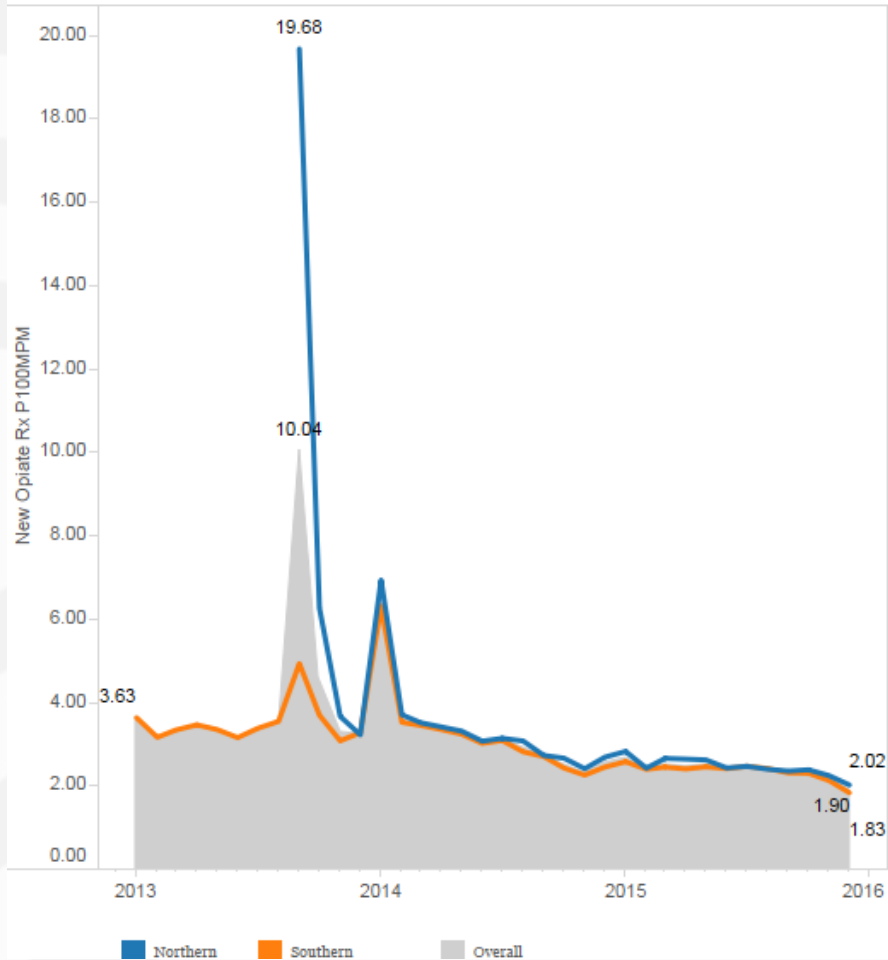


% Change Opioid Users on Unsafe Dose (>120 mg MED) from MPS Launching

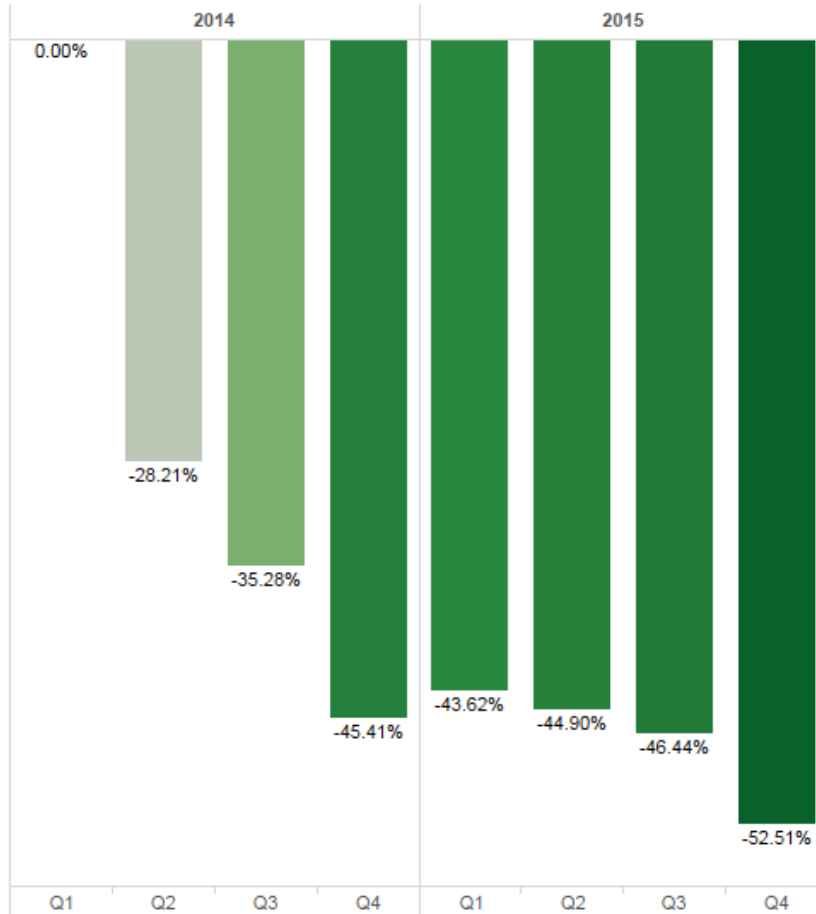


Initial Opioid Prescriptions

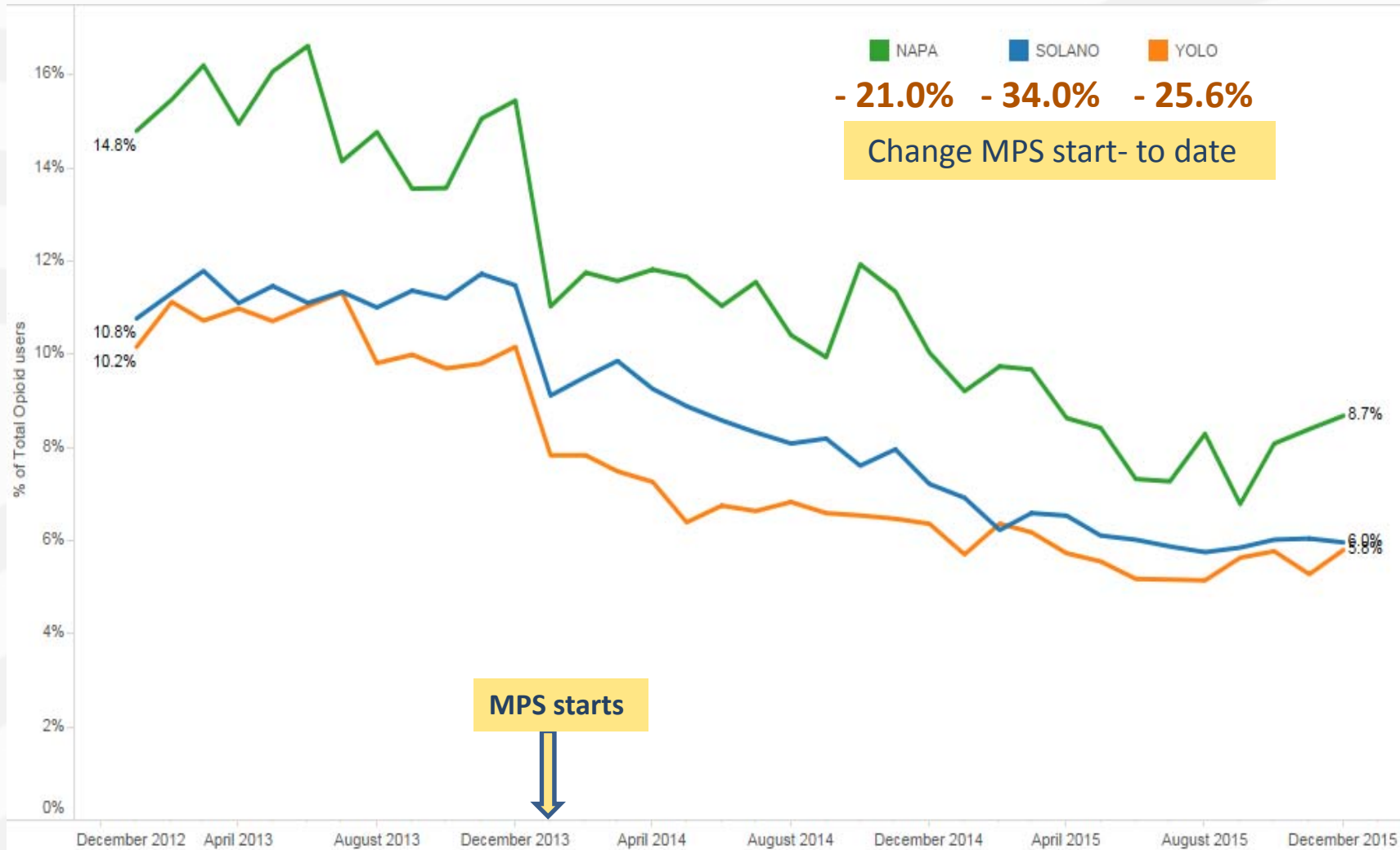
Initial Opiate Fills P100MPM



% Change Initial Opioid Fills PMPM from MPS Launching

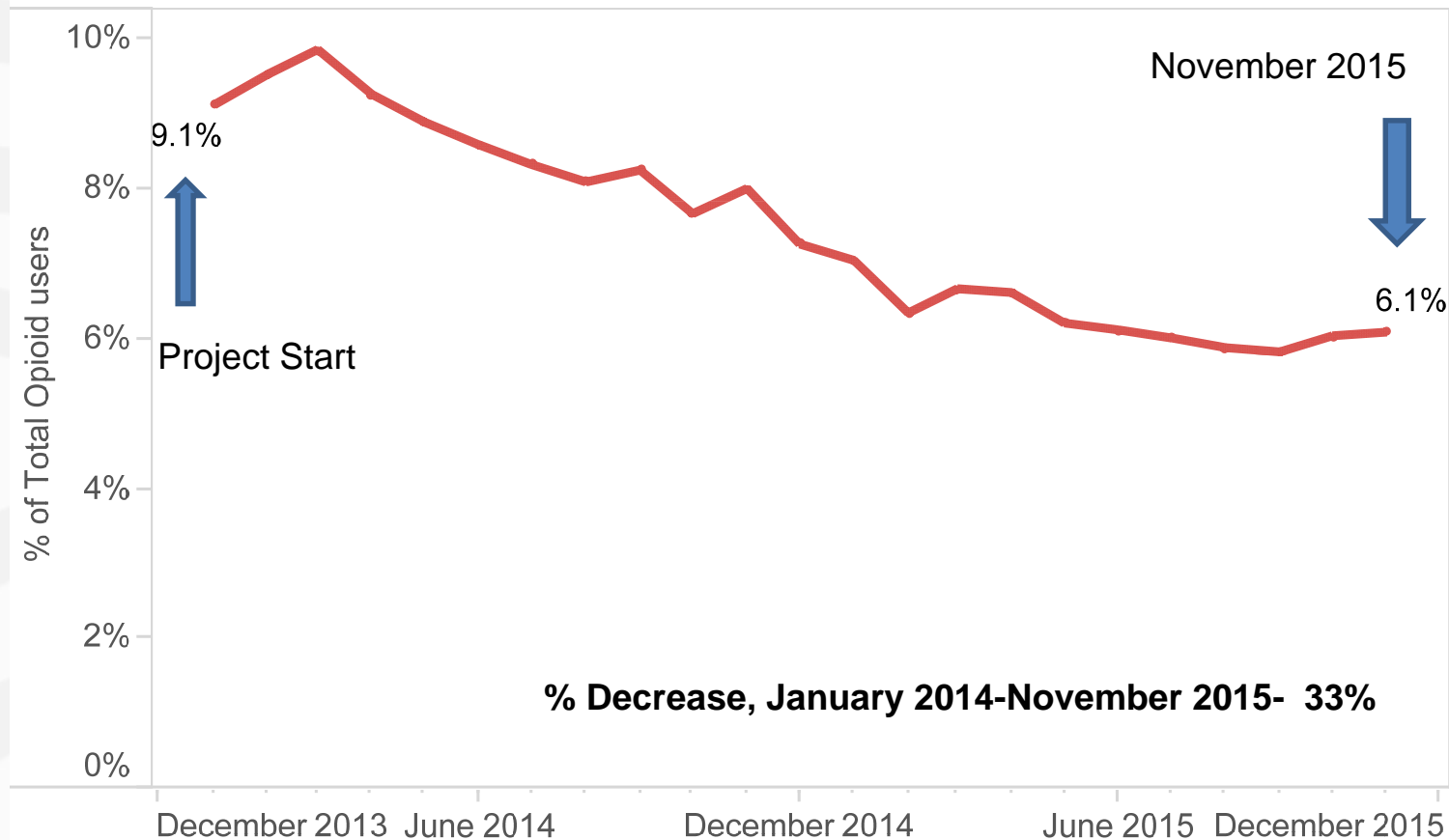


% Unsafe Dose Users for Southeast Region, Jan'13 to Dec'15



% Unsafe Dose Users: Solano County

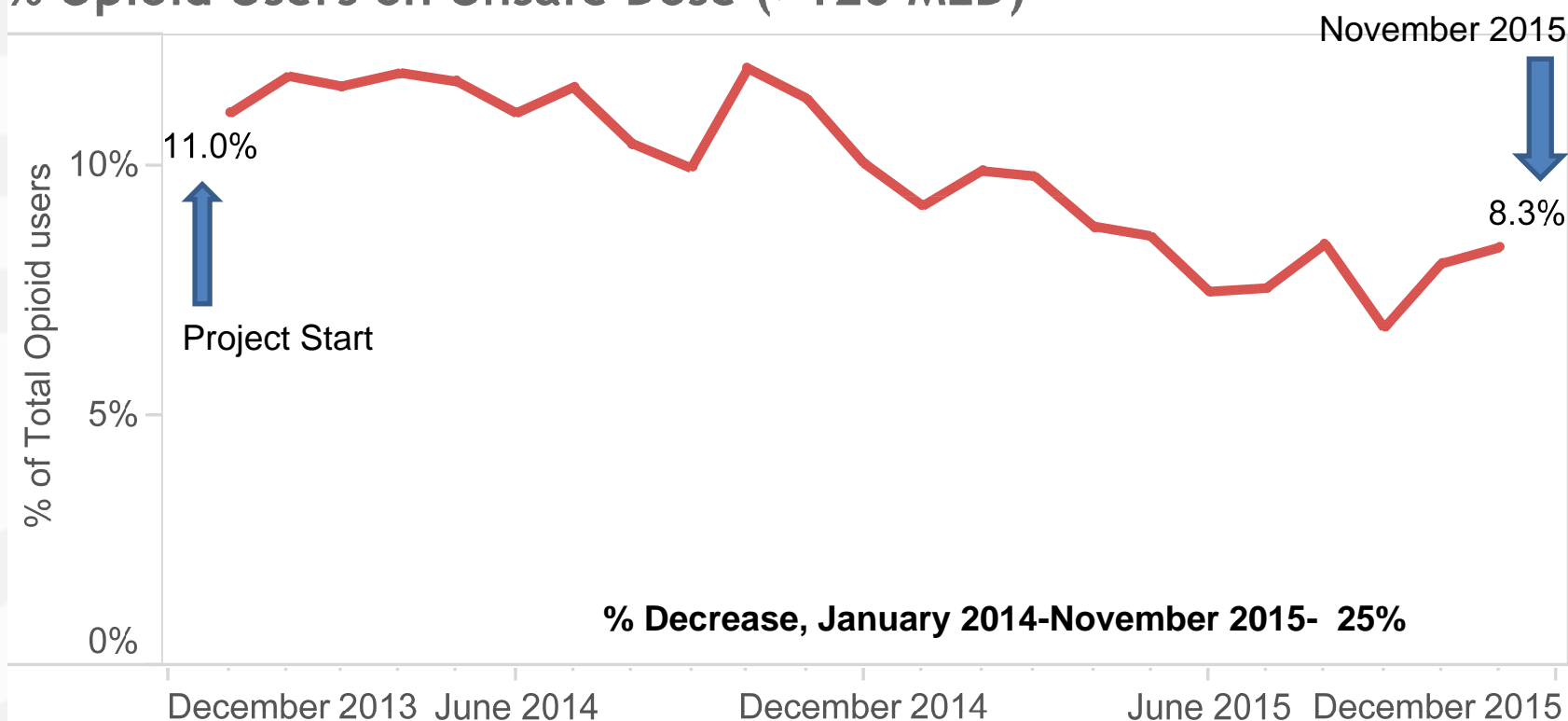
% Opioid Users on Unsafe Dose (>120 MED)



The trend of % of Total Opioid users for Latest Fill Month broken down by User type. The data is filtered on Date Filter and County Filter. The Date Filter filter keeps True. The County Filter filter keeps True.

% Unsafe Dose Users: Napa County

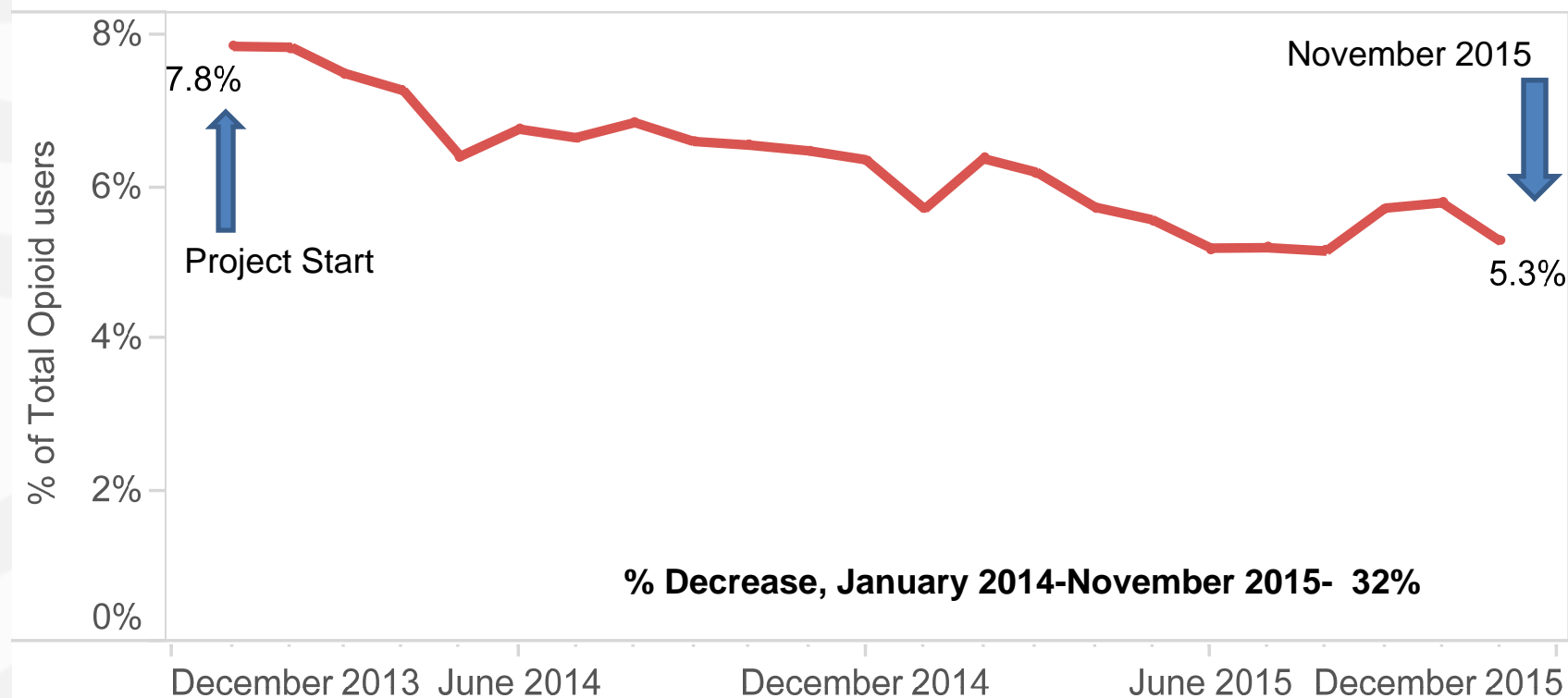
% Opioid Users on Unsafe Dose (>120 MED)



The trend of % of Total Opioid users for Latest Fill Month broken down by User type. The data is filtered on Date Filter and County Filter. The Date Filter filter keeps True. The County Filter filter keeps True.

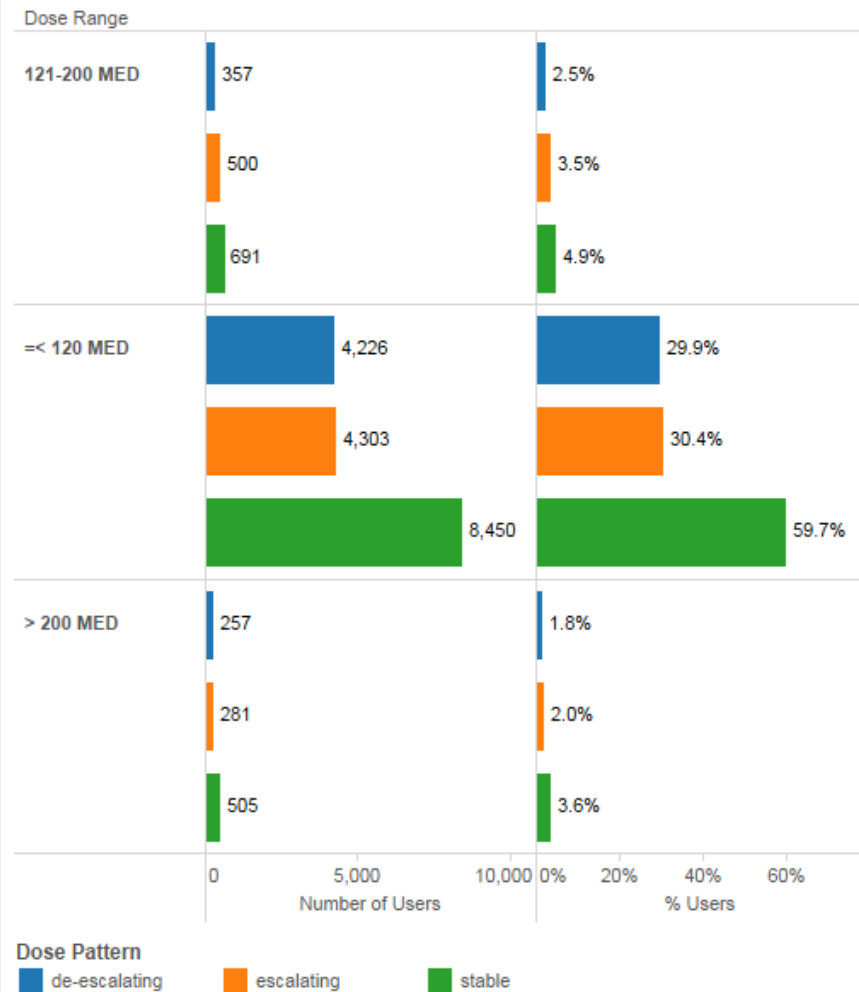
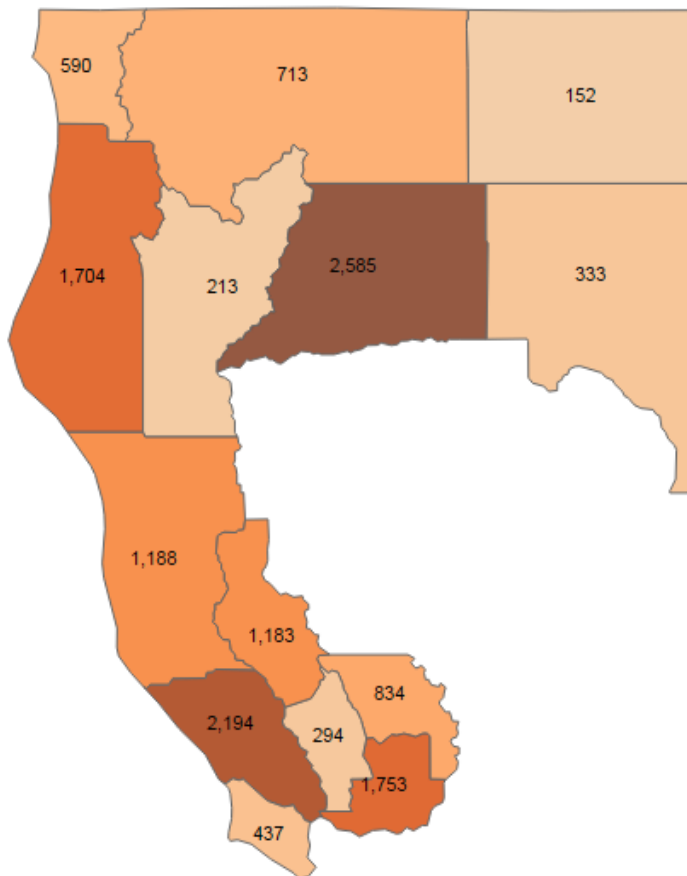
% Unsafe Dose Users: Yolo County

% Opioid Users on Unsafe Dose (>120 MED)

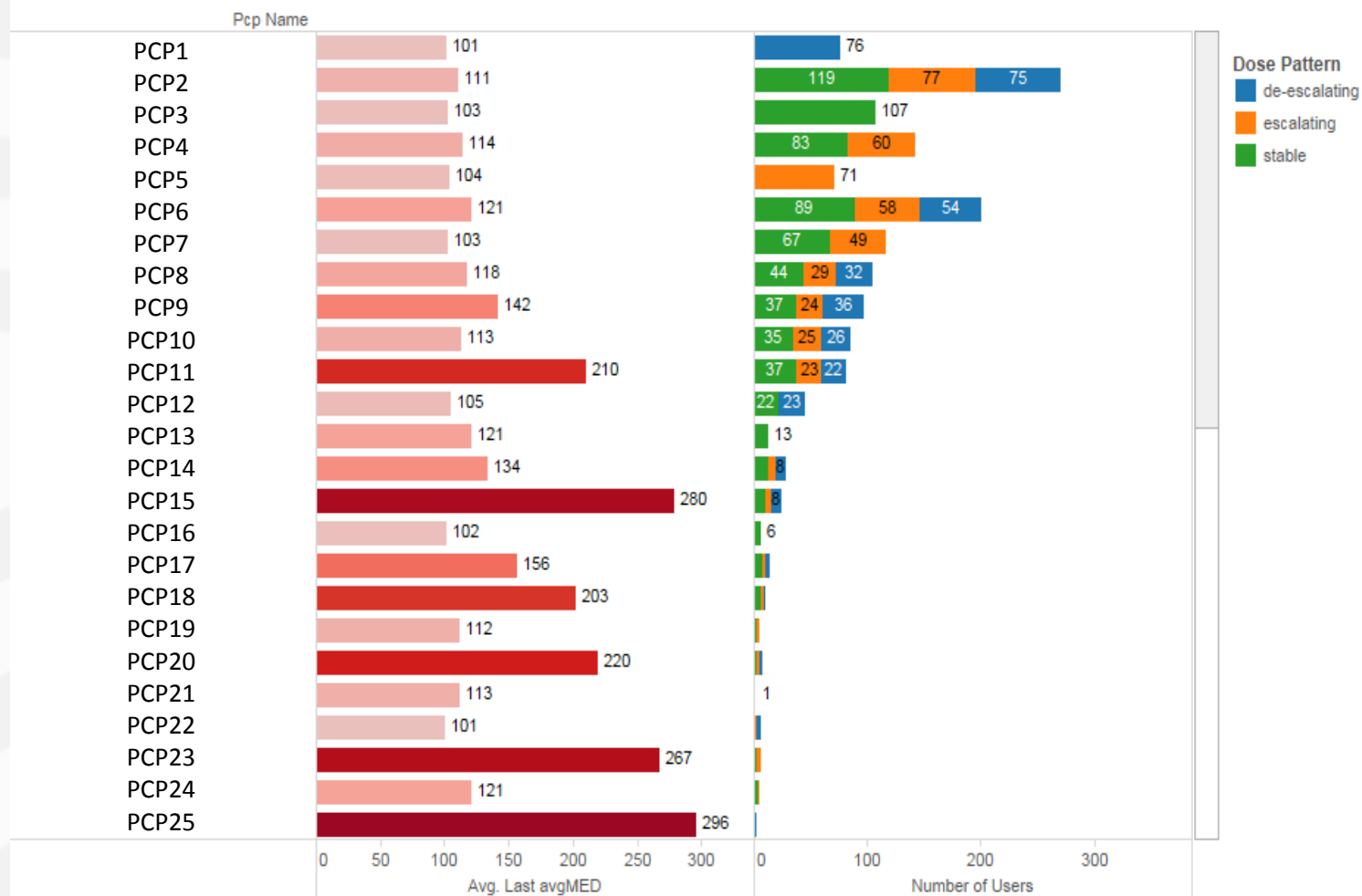


The trend of % of Total Opioid users for Latest Fill Month broken down by User type. The data is filtered on Date Filter and County Filter. The Date Filter filter keeps True. The County Filter filter keeps True.

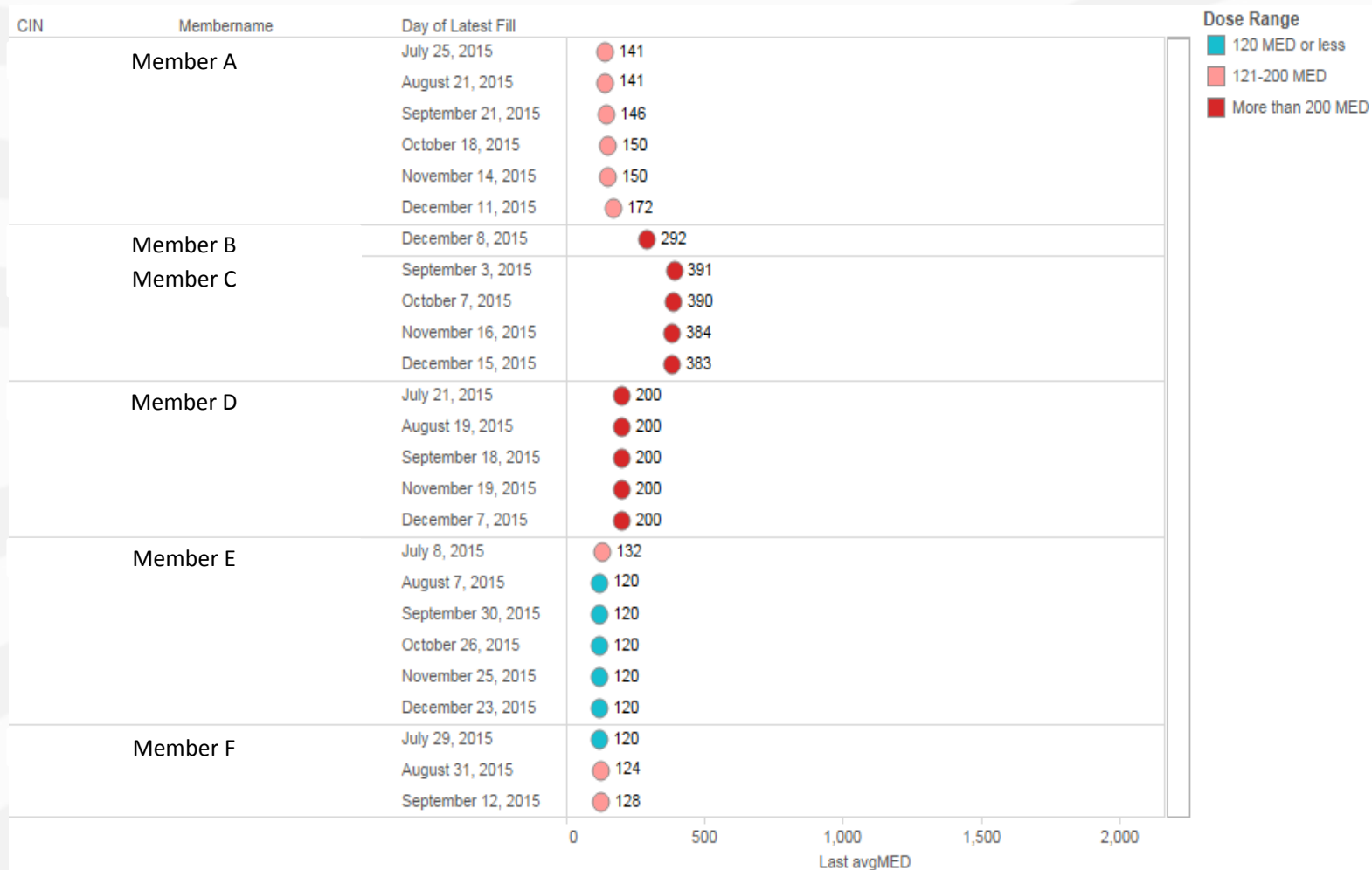
Chronic Opioid Users by County and Dose Pattern, 2015 Q4



Chronic Opioid Users PCP Site Detail



Chronic Opioid Users: Member Details



Data Sharing Process

Dina Haynes, BA, CPhT
Associate Director, Pharmacy Operations
Partnership HealthPlan of California



Data Request Process

- Providers can reach out to PHC to request data using template provided
- PHC will notify health center medical director of request
- PHC will generate request
- PHC will send data to health center medical director to distribute at the site level

**Email all requests to
MPS@Partnershiphp.org**

High Prescriber Sharing Process

- PHC Regional Medical Directors will reach out to PCP Sites who have 15 or more patients on high doses (120mg MED) regardless of request for data

Data Request Process: Information Needed

- Site name/location
- Contact information
- Site NPI
- PCP
- Requested by
- Date Needed
- Start Date
- End Date

Data Request Process: Description of Data Request

Types of reports available include

- Chronic opioid users by assigned PCP Site
 - Chronic opioid users by county (aggregate)
 - PCP Site detail report with dose pattern
 - Chronic opioid users by county and dose group (aggregate)
-
- Email all requests to MPS@Partnershiphp.org

PHC MPS Data Request Form



Partnership Healthplan Managing Pain Safely – Data request

Submission date: 1/25/2016

Site Name	Click here to enter text.	Site NPI	Click here to enter text.
Site Location	Click here to enter text.	PCP	Click here to enter text.
Program for Requested Data	Managing Pain Safely	Requested By	Click here to enter text.
Contact Number	Click here to enter text.	Date Needed	Click here to enter a date.
Fax Number	Click here to enter text.	Start Date	Click here to enter a date.
E-mail address	Click here to enter text.	End Date	Click here to enter a date.

DESCRIPTION OF DATA REQUEST

Please select the reports/data from the drop down menus below:

Report #1	Select a report	County	Select a County
Report #2	Select a report	County	Select a County
Report #3	Select a report	County	Select a County
Report #4	Select a report	County	Select a County

Please email form to the Managing Pain Safely email: MPS@partnershiphp.org

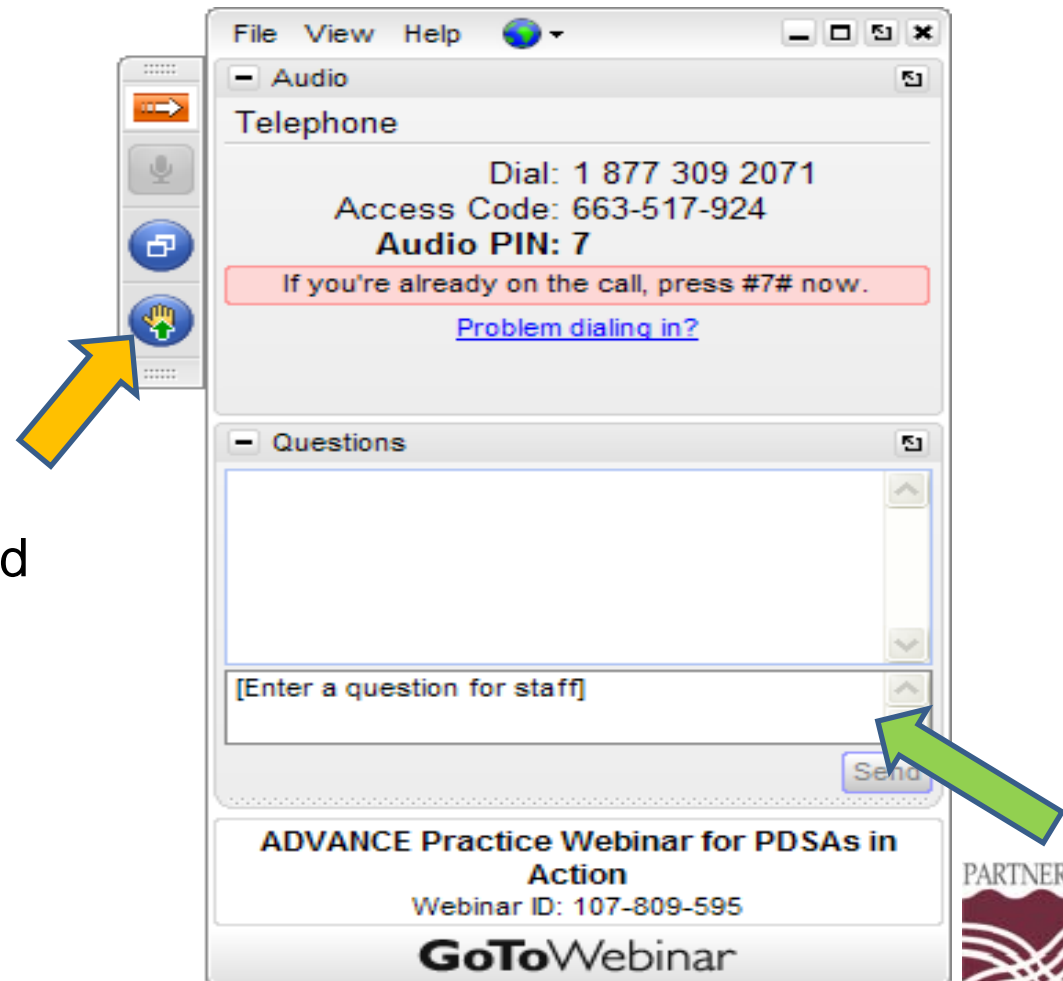
Eureka | Fairfield | Redding | Santa Rosa
(707) 863-4414 | MPS@partnershiphp.org



Questions?

If you have a question or would like to share your comments, please

- Type your question in the “question” box, or
- Click the “raise your hand” icon



PHC Resources

PHC Website:

<http://www.partnershiphp.org/Providers/HealthServices/Pages/Managing-Pain-Safely.aspx>

Member Resources:

<http://www.partnershiphp.org/Members/Medi-Cal/Pages/ManagingPainSafely-MemberResources.aspx>

Thank You!

Contact Information:

MPS Data Requests

MPS@Partnershiphp.org

MPS Project

Danielle Niculescu, Project Coordinator II

Dniculescu@Partnershiphp.org

