

Endocrinology TeleECHO™ Program - Endo ECHO

Medical Director: Matthew Bouchonville, MD

Improving access to care for patients with complex diabetes and other endocrine conditions in rural and underserved communities and disseminating best practices to healthcare providers around the state.

Join us each Wednesday!
12:00 PM – 2:00 PM MT

Connect by Zoom, Phone or Visit Us On-Site

Project ECHO® is a movement to demonopolize knowledge and amplify the capacity to provide best practice care for underserved people all over the world. The Endocrinology program will provide collaborative feedback, recommendations, and evidence based endocrine education through brief lectures and case discussions.



Case Discussions and Curriculum

Each week an endocrine topic will be presented and case examples will be introduced by teleECHO participants. Topics include: complex diabetes, thyroid disease, adrenal and pituitary disorders, hypogonadism, polycystic ovary syndrome, hyperlipidemia, metabolic bone disorders, and transgender health.

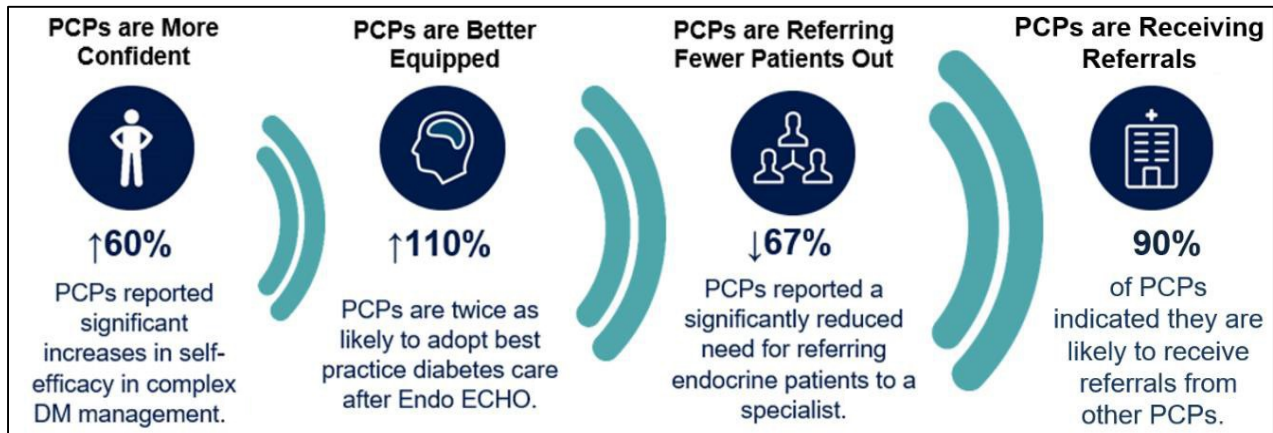
Target Audience

Anyone supporting patients, with endocrine disorders including physicians, advanced practice providers, pharmacists, nurse practitioners, nurses, community health workers, social workers, and other health care personnel.

How to Participate

- Email endoecho@salud.unm.edu to receive session announcement and connection information
- Join us via Zoom or by phone on Wednesdays from 12-2 pm MT.
- Participate in case discussions and brief lectures.
- Complete online evaluation form to receive CME, CPE, CNE, ASWB and CHW credits.

Participating in Endo ECHO Benefits Providers and Patients



Email: endoecho@salud.unm.edu

IT Support: 505-750-4897 or echoit@salud.unm.edu

Website: <http://echo.unm.edu>

